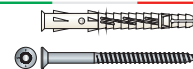


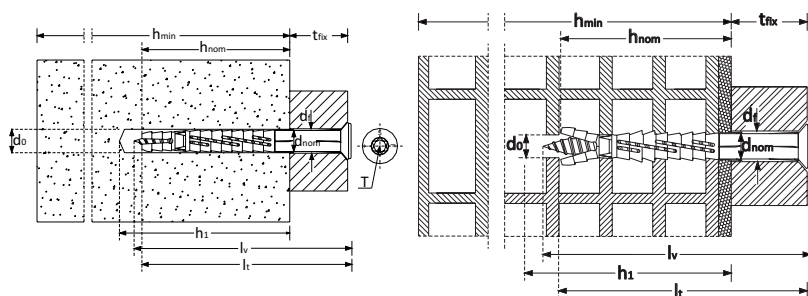
# VS 12 Handyplug®

Ancorante prolungato UNIVERSALE in nylon con bordo svasato (BREV.), con vite TPS finitura speciale "Steel Saver 1000h - ZL" con resistenza 1.000 ore in nebbia salina

**Handyplug**  
IL TASSELLO TUTTOFARE



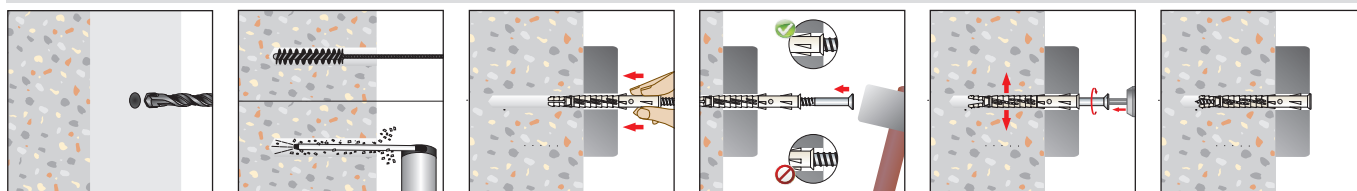
## SCHEDA TECNICA



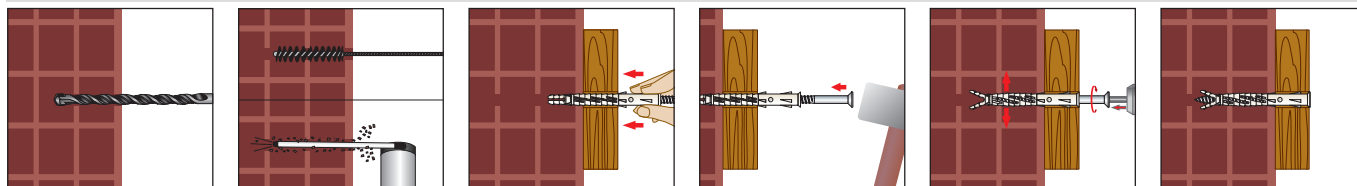
**VS12** - con vite in acciaio al carbonio  
finitura speciale STEEL SAVER 1000H

$d_{nom}$	diámetro dell'ancorante
$l_t$	lunghezza del tassello
$d_v$	diámetro della vite
$l_v$	lunghezza della vite
$t_{fix}$	spessore massimo fissabile
$d_o$	diámetro del foro
$h_1$	profondità del foro
$h_{min}$	spessore del materiale di supporto
$h_{nom}$	profondità di inserimento
$h_{ef}$	profondità efficace di inserimento
$d_f$	diámetro del foro nell'elemento da fissare
$c_{min}$	minima distanza dal bordo consentita
$s_{min}$	minimo interasse consentito
$N_k$	carico caratteristico a estrazione
$V_k$	carico caratteristico a taglio
$F$	Resistenza caratteristica indipendente dalla direzione del carico




### Sequenza di installazione su materiali compatti



### Sequenza di installazione su materiali semipieni - eseguire il foro con la sola modalità di rotazione



### DATI TECNICI PER APPLICAZIONI SU CALCESTRUZZO E MURATURA

												 MURATURA FORATA *	 CALCESTRUZZO ≥ C20/25	 MURATURA PIENA	
Codice Articolo	Misura Ancorante <i>d<sub>nom</sub> x l<sub>t</sub> (mm)</i>	Misura Vite <i>d<sub>v</sub> x l<sub>v</sub>(mm)</i>	<i>t<sub>fix</sub></i> (mm)	<i>d<sub>o</sub></i> (mm)	<i>h<sub>1</sub></i> (mm)	<i>h<sub>min</sub></i> (mm)	<i>h<sub>ef</sub></i> (mm)	<i>d<sub>f</sub></i> (mm)	T	<i>c<sub>min</sub></i> (mm)	<i>s<sub>min</sub></i> (mm)	F (kN)	N <sub>k</sub> (kN)	V <sub>k</sub> (kN)	F (kN)
Ø 8															
Vs 12 08 080	8 x 80	6 x 85	10	8	90	70	70	9	T 30	90		0,9	1,2	3,2	2,0
Vs 12 08 100	8 x 100	6 x 105	30												
Vs 12 08 120	8 x 120	6 x 125	50												
Vs 12 08 140	8 x 140	6 x 145	70												
Ø 10															
Vs 12 10 080	10 x 80	7 x 85	10	10	90	70	70	11	T 40	90		0,9	1,6	4,4	2,0
Vs 12 10 100	10 x 100	7 x 105	30												
Vs 12 10 120	10 x 120	7 x 125	50												
Vs 12 10 140	10 x 140	7 x 145	70												
Vs 12 10 160	10 x 160	7 x 175	90												
Vs 12 10 200	10 x 200	7 x 205	130												
Vs 12 10 230	10 x 230	7 x 235	160												

\* Muratura forata in argilla secondo EN771-1-Poroton-Hochlochziegel-Block-T-24,0-0.9L Wienerberger

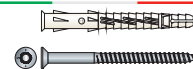
# VS 12

## Handyplug®

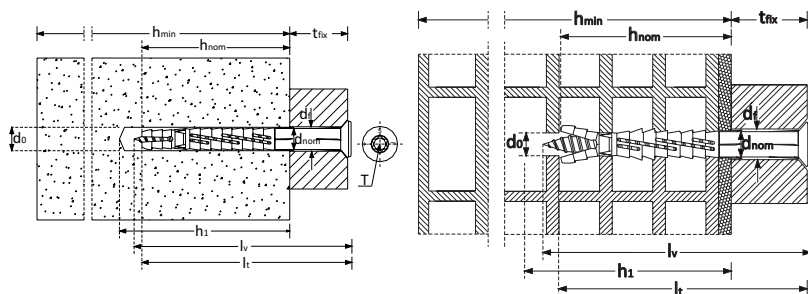


Multi-purpose cylinder edge nylon anchor, with 6-lobe recess hexagonal washer head special wood screw, "Steel Saver® 1000h - ZL"

**Handyplug**  
THE FACTOTUM PLUG



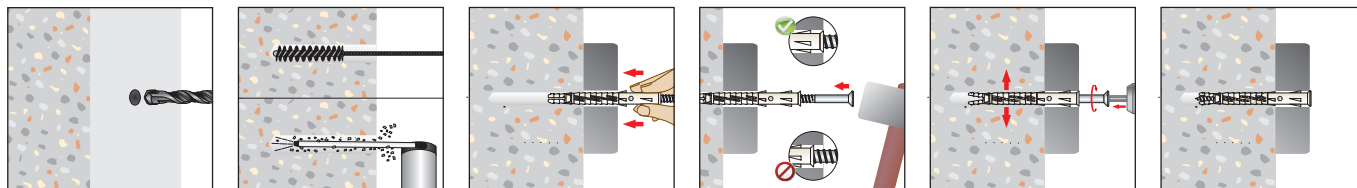
### TECHNICAL DATA SHEET



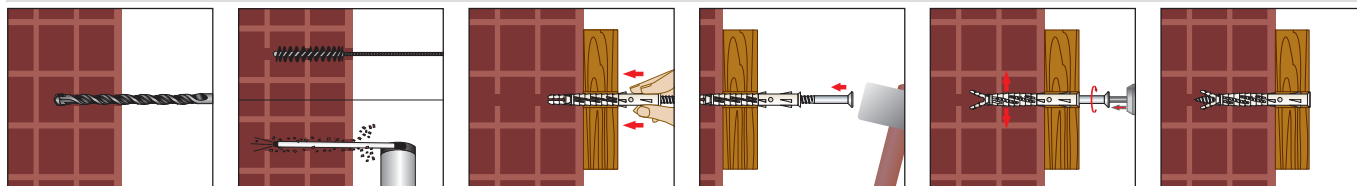
VS12 - with arboned steel screw,  
"Steel Saver® 1000h - ZL"

$d_{nom}$	anchor diameter
$l_t$	anchor length
$d_v$	screw diameter
$l_v$	screw length
$t_{fix}$	maximum thickness of fixture
$d_o$	drill hole diameter
$h_1$	depth of drill hole
$h_{min}$	minimum thickness of the member
$h_{nom}$	minimum overall anchor embedment depth
$h_{ef}$	effective anchorage depth
$d_f$	diameter of clearance hole in the fixture
$c_{min}$	minimum allowable edge distance
$s_{min}$	minimum allowable spacing
$N_k$	characteristic resistance to tension load
$V_k$	characteristic resistance to shear load
$F$	Characterisitch resistance indipendent from the load direction




#### Installation sequence in concrete and solid masonry



#### Installation sequence in hollow masonry - make the drill hole with rotary drilling only



### TECHNICAL DATA FOR USE IN CONCRETE AND MASONRY

												 HOLLOW MASONRY *	 CONCRETE ≥ C20/25	 SOLID MASONRY	
Item Code	Anchor Size <i>d<sub>nom</sub> x l<sub>t</sub> (mm)</i>	Screw Size <i>d<sub>v</sub> x l<sub>v</sub>(mm)</i>	t <sub>fix</sub> (mm)	d <sub>o</sub> (mm)	h <sub>1</sub> (mm)	h <sub>min</sub> (mm)	h <sub>ef</sub> (mm)	d <sub>f</sub> (mm)	T	c <sub>min</sub> (mm)	s <sub>min</sub> (mm)	F (kN)	N <sub>k</sub> (kN)	V <sub>k</sub> (kN)	F (kN)
Ø 8															
Vs 12 08 080	8 x 80	6 x 85	10	8	90	70	70	9	T 30	90		0,9	1,2	3,2	2,0
Vs 12 08 100	8 x 100	6 x 105	30												
Vs 12 08 120	8 x 120	6 x 125	50												
Vs 12 08 140	8 x 140	6 x 145	70												
Ø 10															
Vs 12 10 080	10 x 80	7 x 85	10	10	90	70	70	11	T 40	90		0,9	1,6	4,4	2,0
Vs 12 10 100	10 x 100	7 x 105	30												
Vs 12 10 120	10 x 120	7 x 125	50												
Vs 12 10 140	10 x 140	7 x 145	70												
Vs 12 10 160	10 x 160	7 x 175	90												
Vs 12 10 200	10 x 200	7 x 205	130												
Vs 12 10 230	10 x 230	7 x 235	160												

\* Perforated clay brick, acc. EN 771-1:2011, Poroton-Kleinformat HlZB- 2DF -0.9 "Wienerberger"